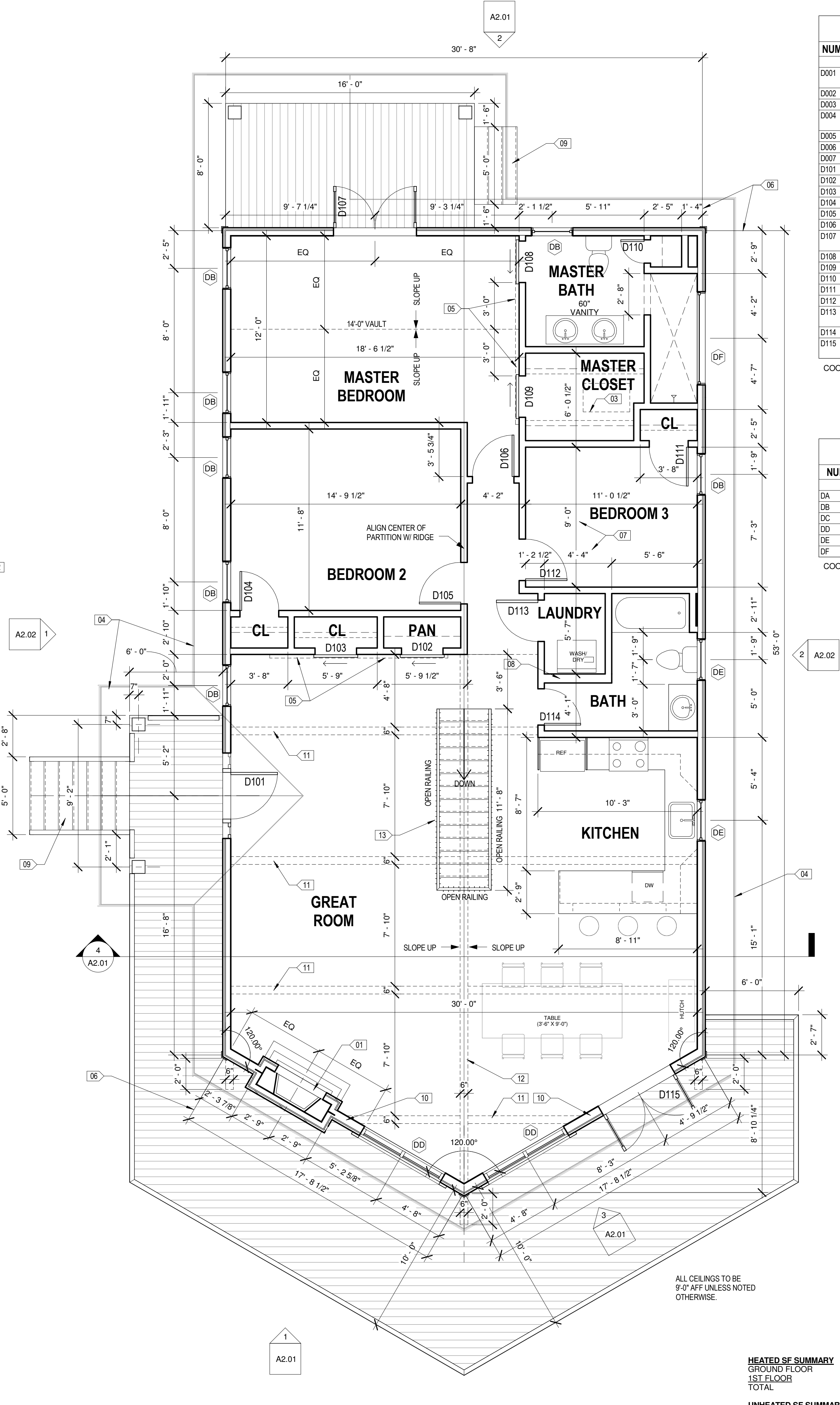


2 GROUND FLOOR PLAN  
1/4" = 1'-0"



1 FIRST FLOOR PLAN  
1/4" = 1'-0"

DOOLEY RESIDENCE DOOR SCHEDULE		
NUMBER	DESCRIPTION	COMMENTS
D001	EXTERIOR PAIR, 2'-8" X 6'-8"	FULL GLASS. PROVIDE LOW "E" GLAZING. PROVIDE INTEGRAL TRANSOM ABOVE.
D002	INTERIOR, 2'-8" X 6'-8"	
D003	INTERIOR, 2'-8" X 6'-8"	
D004	INTERIOR, 2'-8" X 6'-8" INSUL	CONFIRM SIZE WILL ALLOW UTILITY EQUIP ACCESS. INSULATED
D005	INTERIOR, 2'-4" X 6'-8"	
D006	INTERIOR, 1'-6" X 6'-8"	
D007	INTERIOR, 1'-6" X 6'-8"	
D101	EXTERIOR, 3'-0" X 6'-8" W/ SIDELIGHTS	WOOD / GLASS DOOR W/ SIDELIGHTS.
D102	INTERIOR SLIDER, 2'-8" X 6'-8"	BARN-DOOR STYLE OVERHEAD SLIDER
D103	INTERIOR SLIDER, 2'-8" X 6'-8"	BARN-DOOR STYLE OVERHEAD SLIDER
D104	INTERIOR, 2'-4" X 6'-8"	
D105	INTERIOR, 2'-8" X 6'-8"	
D106	INTERIOR, 2'-8" X 6'-8"	
D107	EXTERIOR PAIR, 2'-8" X 6'-8"	FULL GLASS. PROVIDE LOW "E" GLAZING. PROVIDE INTEGRAL TRANSOM ABOVE.
D108	INTERIOR SLIDER, 2'-8" X 6'-8"	BARN-DOOR STYLE OVERHEAD SLIDER
D109	INTERIOR SLIDER, 2'-8" X 6'-8"	BARN-DOOR STYLE OVERHEAD SLIDER
D110	INTERIOR, 1'-6" X 6'-8"	
D111	INTERIOR, 2'-8" X 6'-8"	
D112	INTERIOR, 2'-8" X 6'-8"	
D113	INTERIOR, 2'-8" X 6'-8" INSUL	CONFIRM SIZE WILL ALLOW UTILITY EQUIP ACCESS. INSULATED
D114	INTERIOR, 2'-4" X 6'-8"	
D115	EXTERIOR PAIR, 2'-8" X 6'-8"	FULL GLASS. PROVIDE LOW "E" GLAZING. PROVIDE INTEGRAL TRANSOM ABOVE.

DOOLEY RESIDENCE WINDOW SCHEDULE		
NUMBER	TYPE	DESCRIPTION
DA	TWIN, 3'-0" X 6'-0"	DOUBLE HUNG, LOW "E" GLAZING
DB	SINGLE, 2'-8" X 6'-0"	DOUBLE HUNG, LOW "E" GLAZING
DC	SINGLE, 2'-8" X 1'-6"	FIXED, LOW "E" GLAZING
DD	SEE ELEVATION 3/A2.01 FOR DIMENSIONS	FIXED, LOW "E" GLAZING
DE	SINGLE, 2'-8" X 4'-4"	DOUBLE HUNG, LOW "E" GLAZING
DF	SINGLE, 6'-0" X 1'-8"	FIXED, LOW "E" GLAZING

- KEYNOTES - FLOOR PLAN**
- 01 COORDINATE DIMENSIONS WITH SELECTED FIREPLACE UNIT AND VENT REQUIREMENTS.
  - 02 CONDENSOR UNIT LOCATION.
  - 03 ATTIC ACCESS STAIR SHOWN DASHED. COORDINATE EXACT LOCATION WITH TRUSS LAYOUT.
  - 04 ROOF LAYOUT SHOWN HALFTONE.
  - 05 OVERHEAD SLIDING DOOR TRACK, SHOWN DASHED.
  - 06 DIMENSION TO EXTERIOR FACE OF STUD, TYPICAL.
  - 07 INTERIOR DIMENSION TO FACE OF WALL FINISH, TYPICAL.
  - 08 PROVIDE 2X6 STUD FRAMING AT REAR OF LAUNDRY EQUIPMENT.
  - 09 COORDINATE EXTENT OF STAIR WITH FINAL GRADE. SEE PLAN FOR STAIR WIDTH W/ RAILINGS.
  - 10 PROVIDE 2X6 STUDS AT PROW END, CONFIRM WITH STRUCTURAL ENGINEERING.
  - 11 FALSE BEAMS ABOVE, SHOWN DASHED. SEE PLAN AND SECTION FOR DIMENSIONS.
  - 12 FALSE RIDGE BEAM ABOVE, SEE PLAN AND SECTION FOR DIMENSIONS.
  - 13 WROUGHT IRON RAILING AND PICKETS.

**HEATED SF SUMMARY**

GROUND FLOOR	1,767
1ST FLOOR	1,782
TOTAL	3,549

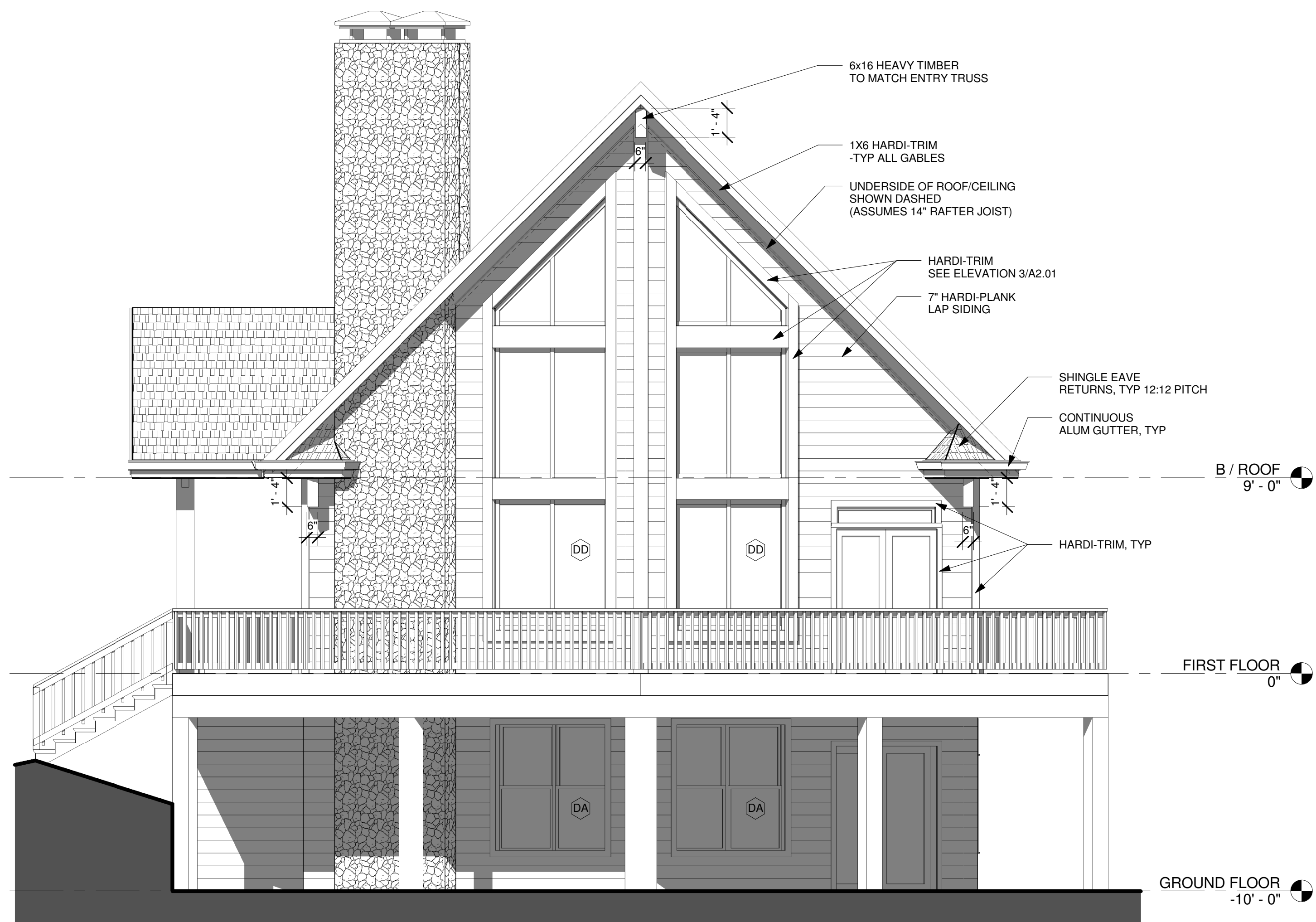
**UNHEATED SF SUMMARY**

FRONT PORCH	718
BACK PORCH	128

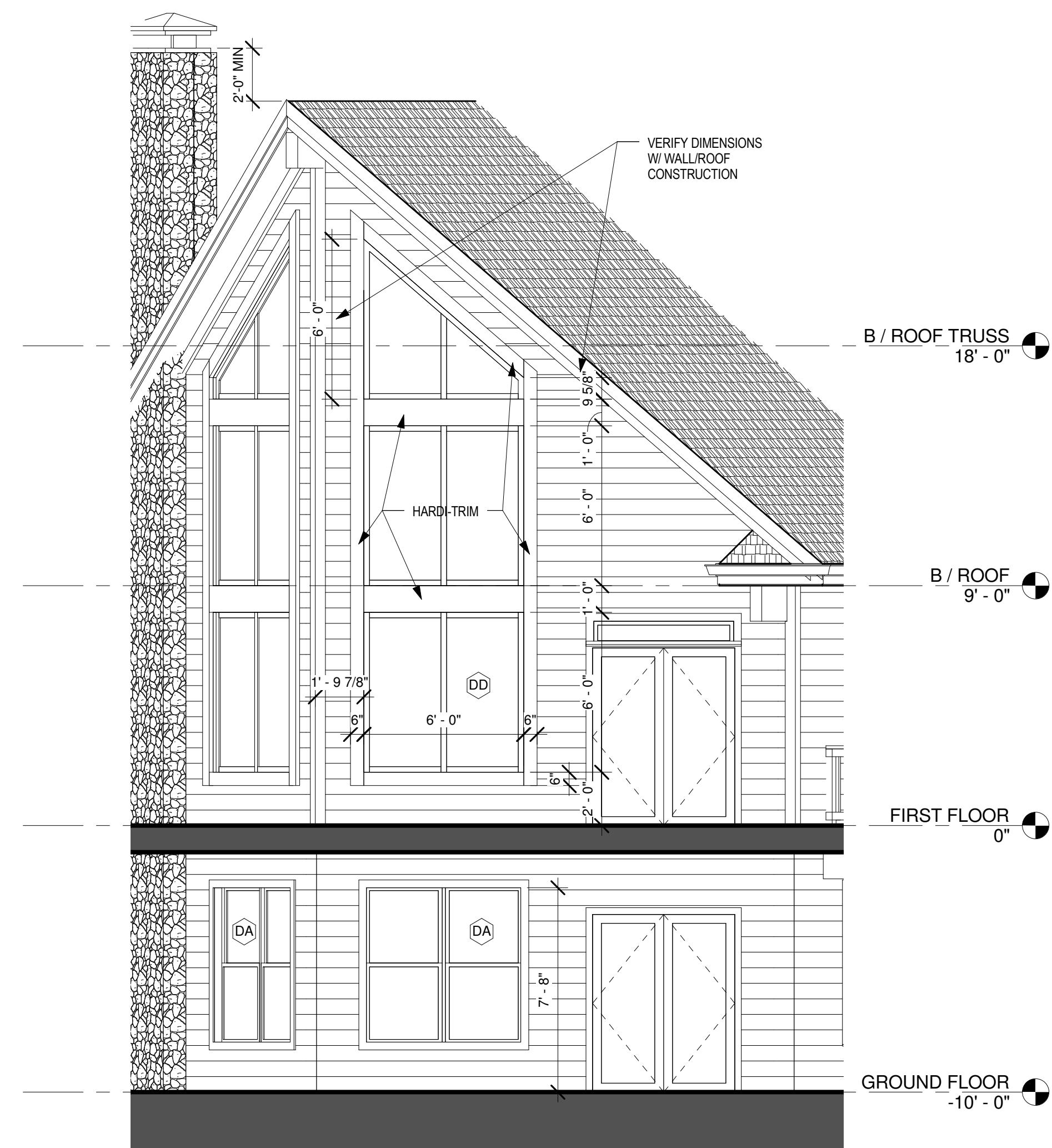
Revision

FLOOR PLANS

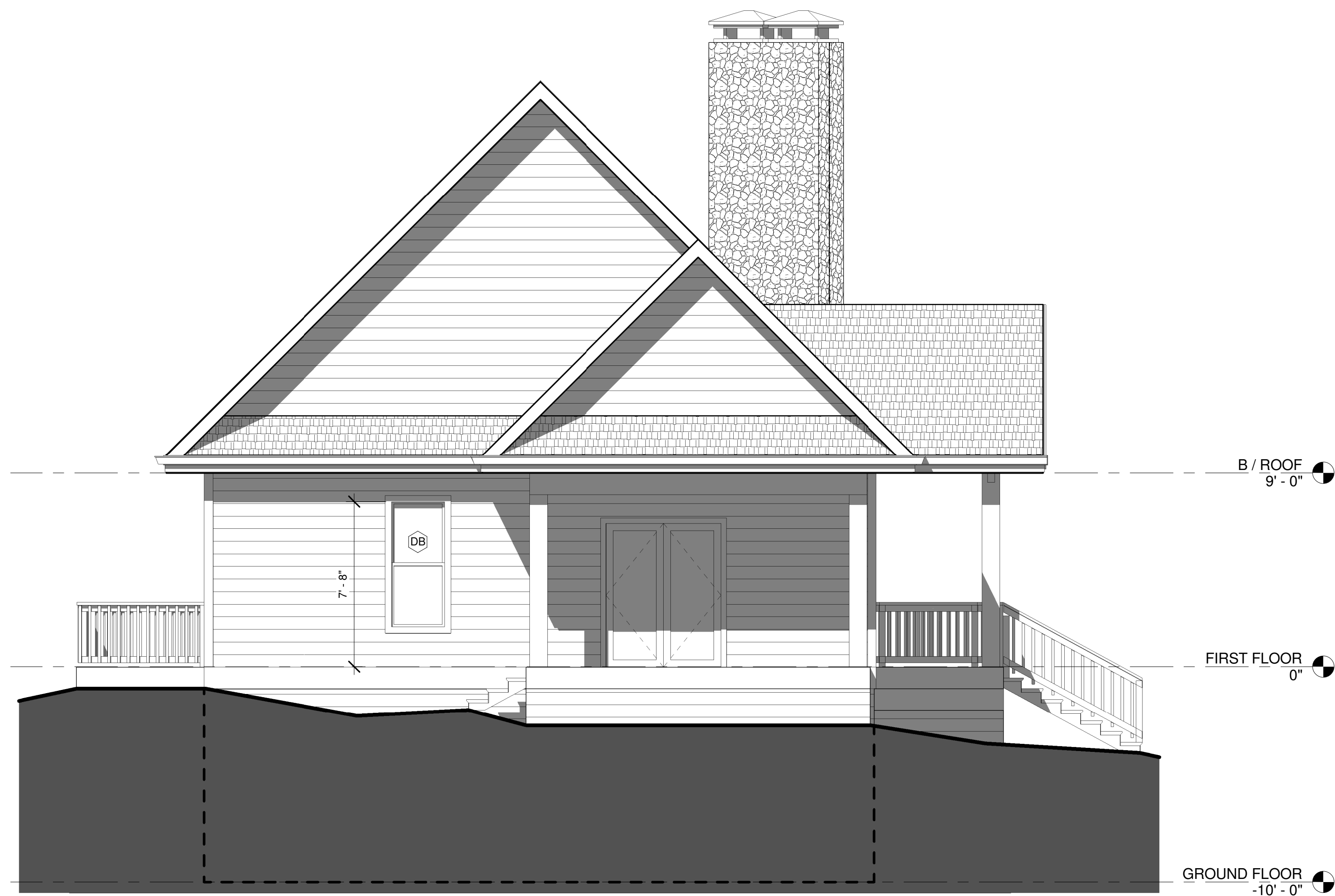
A1.01



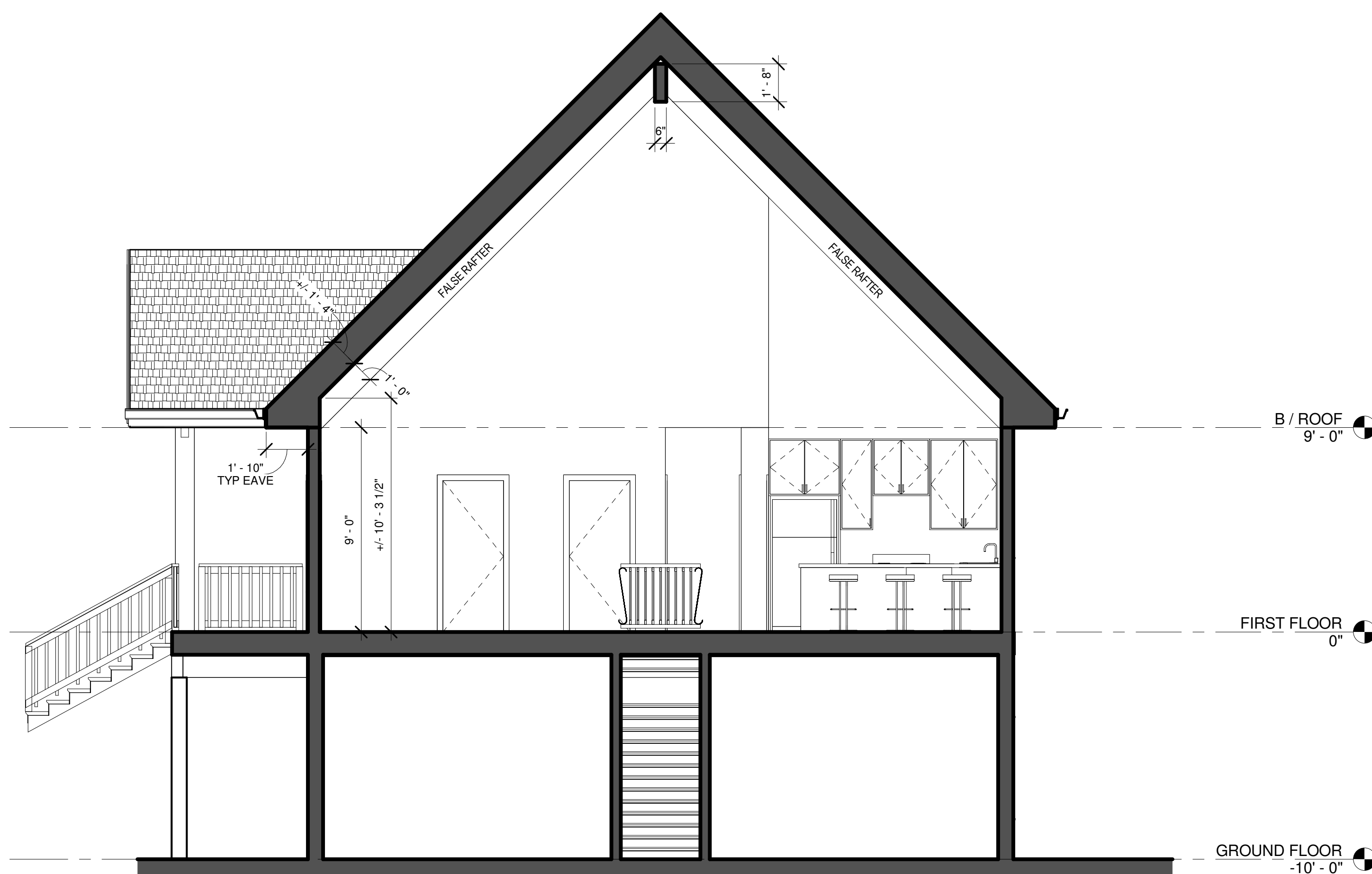
1 DOOLEY ELEVATION - DECK SIDE  
1/4" = 1'-0"



3 DOOLEY GLAZING ELEVATION  
1/4" = 1'-0"



2 DOOLEY ELEVATION - REAR  
1/4" = 1'-0"



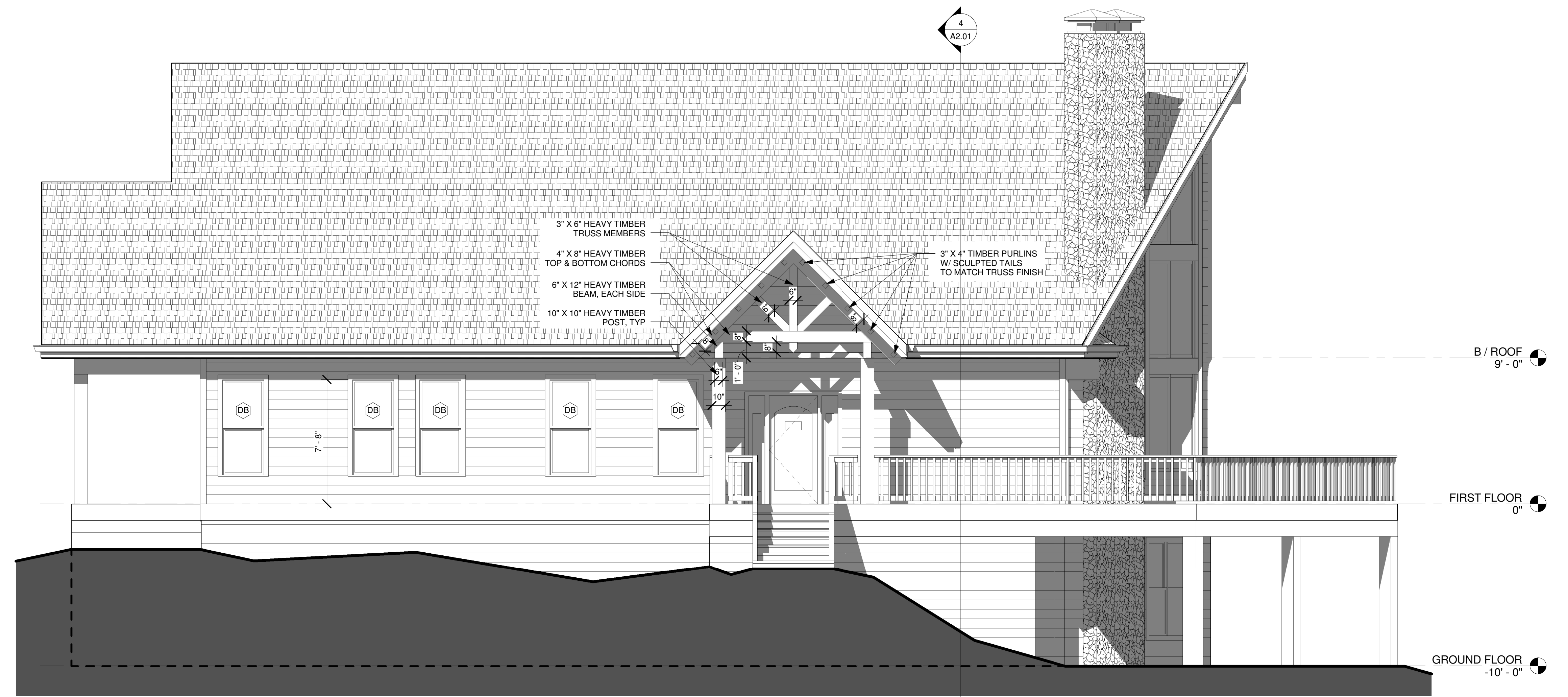
4 SCHEMATIC SECTION  
1/4" = 1'-0"

Revision

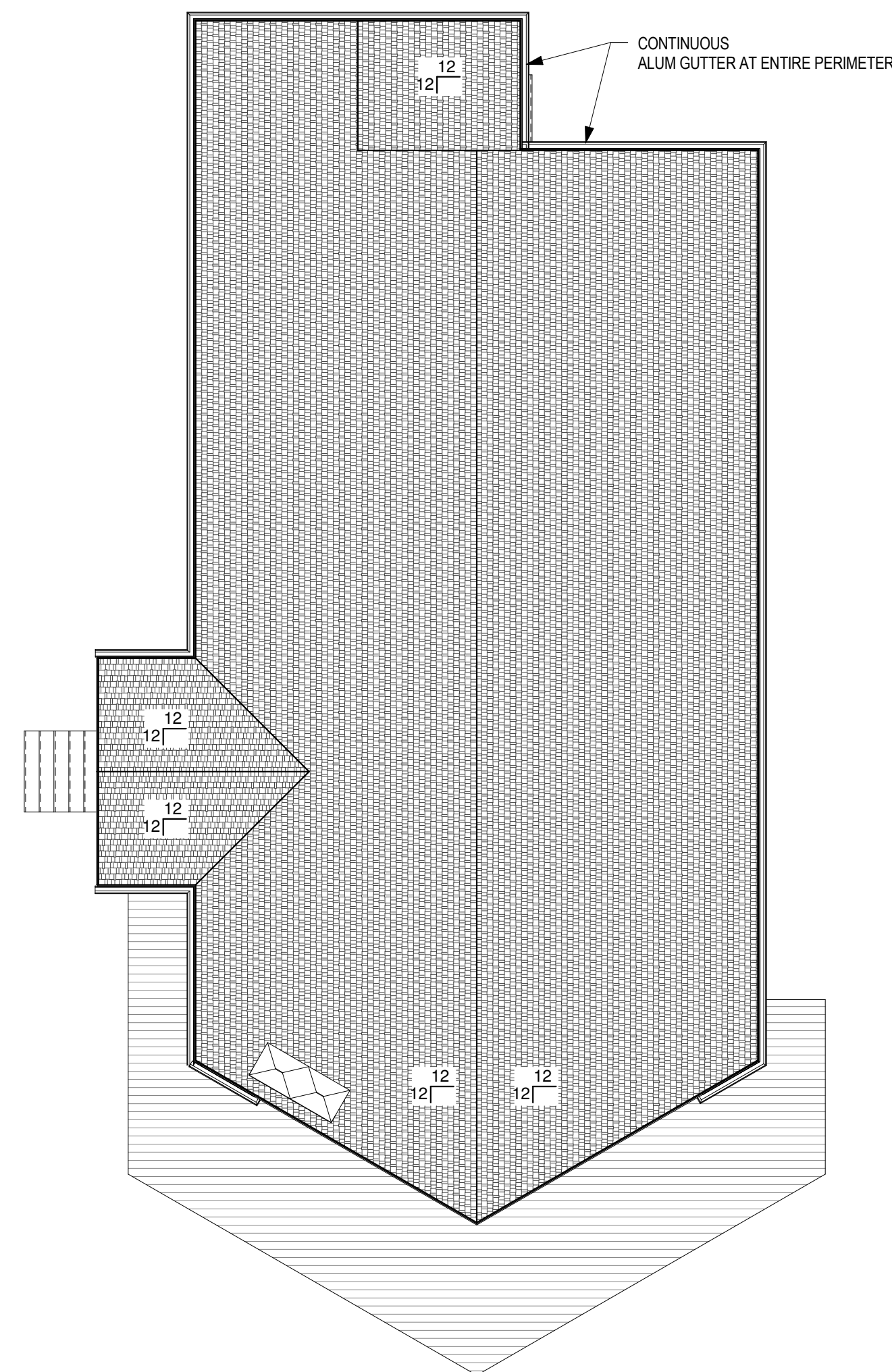
EXTERIOR ELEVATIONS &  
ROOF PLAN

A2.01

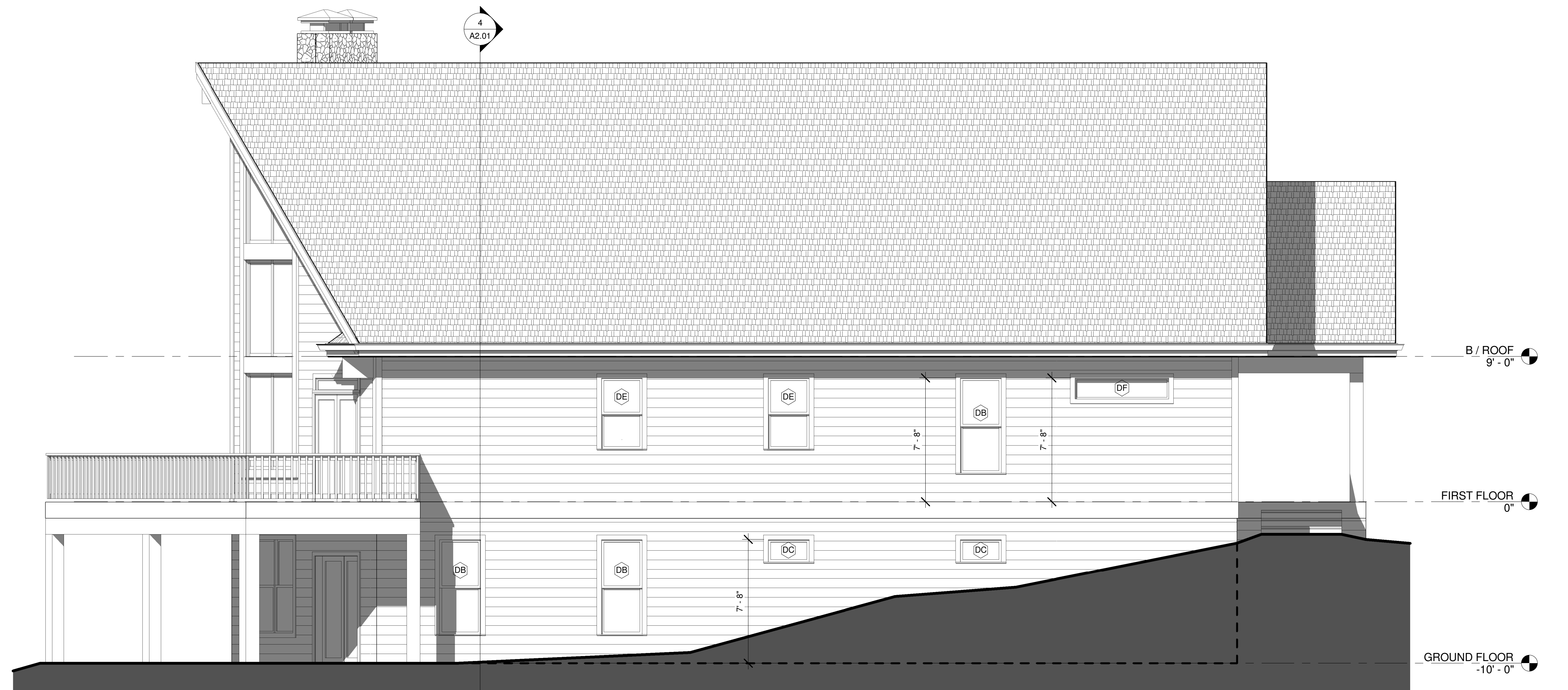
Project Number 2017.03  
Date 09/24/2017



1 DOOLEY ELEVATION - ENTRY SIDE  
 1/4" = 1'-0"



3 ROOF PLAN  
 1/8" = 1'-0"

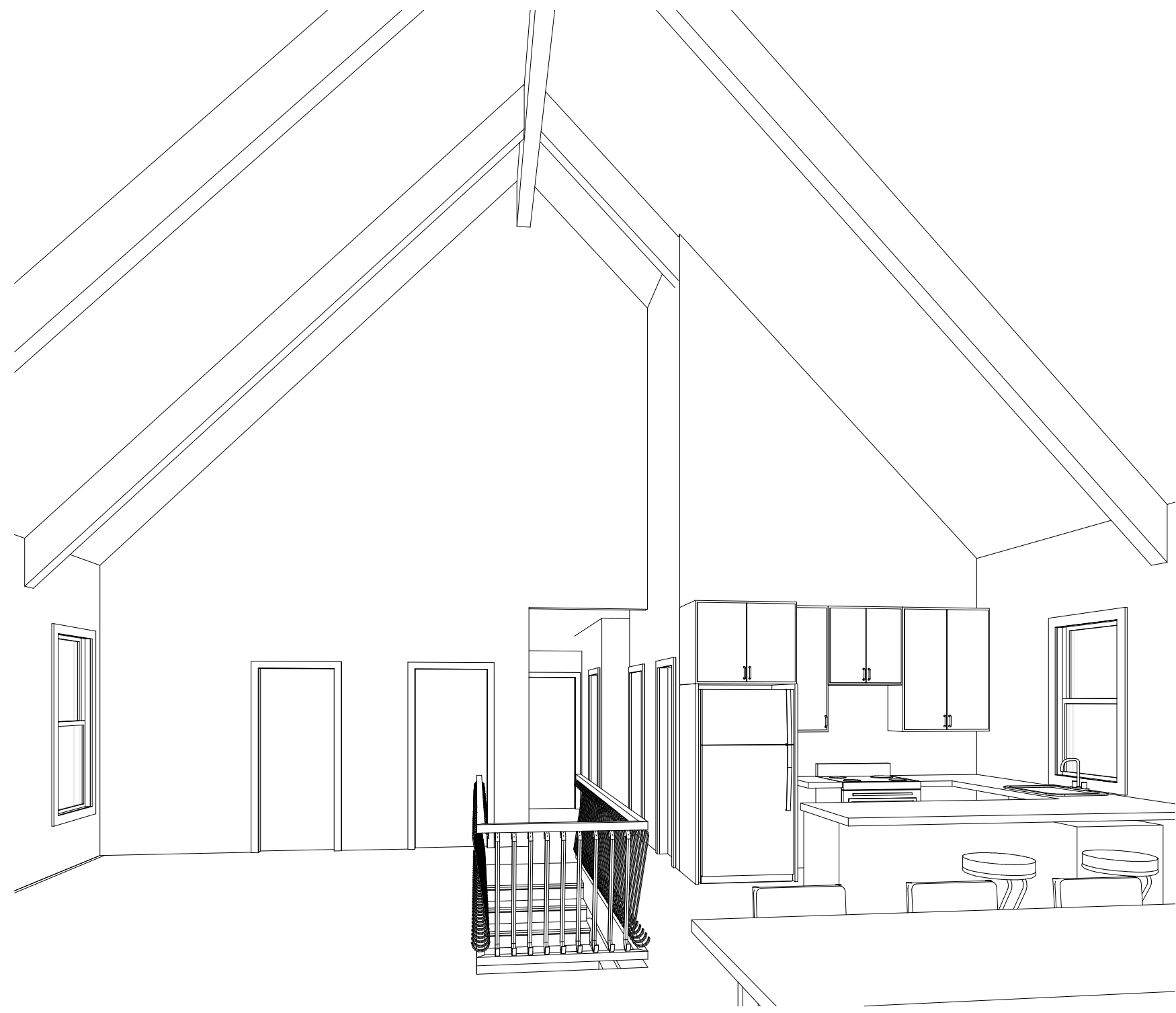


2 DOOLEY ELEVATION - SIDE  
 1/4" = 1'-0"

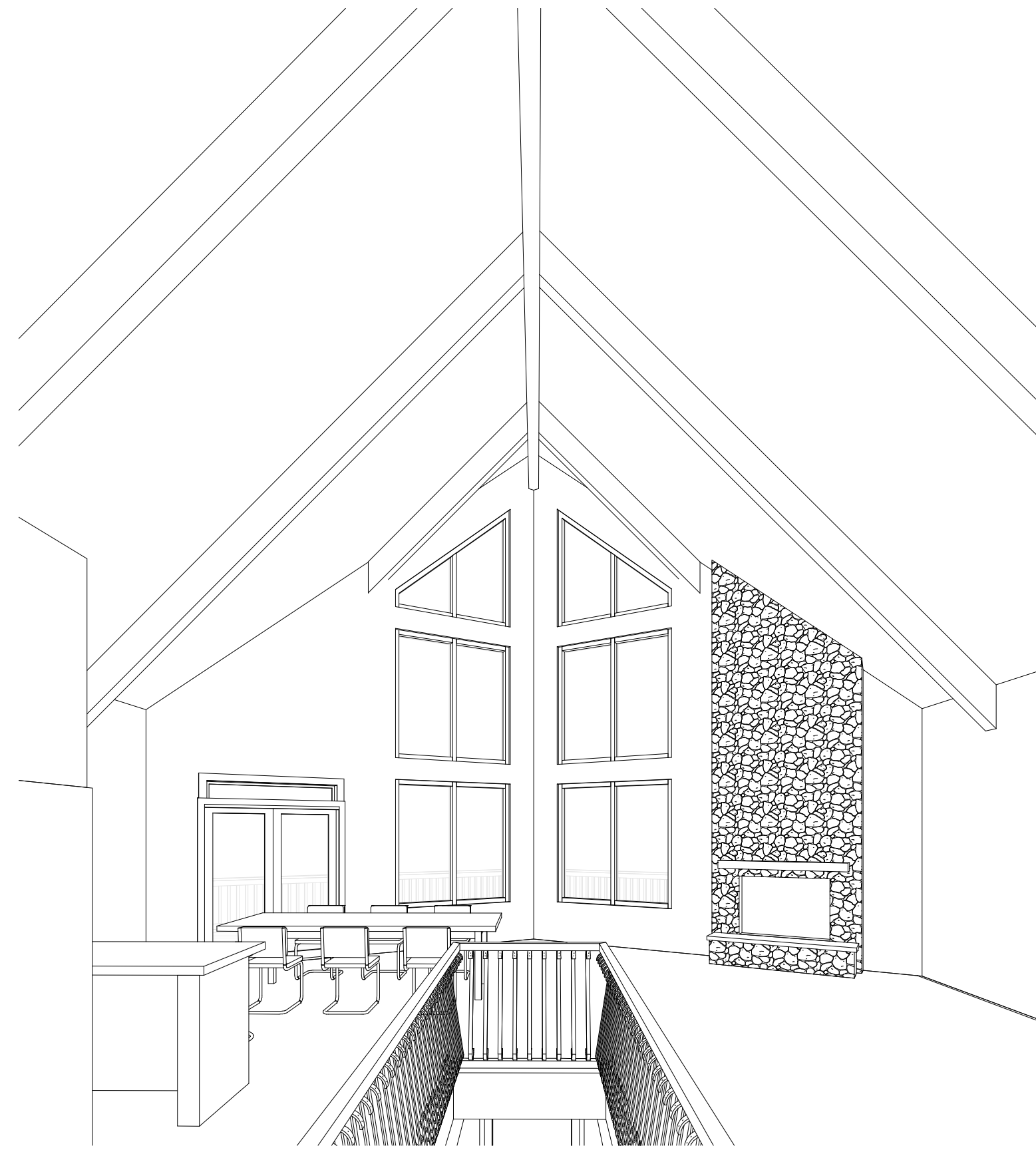
Revision

EXTERIOR ELEVATIONS

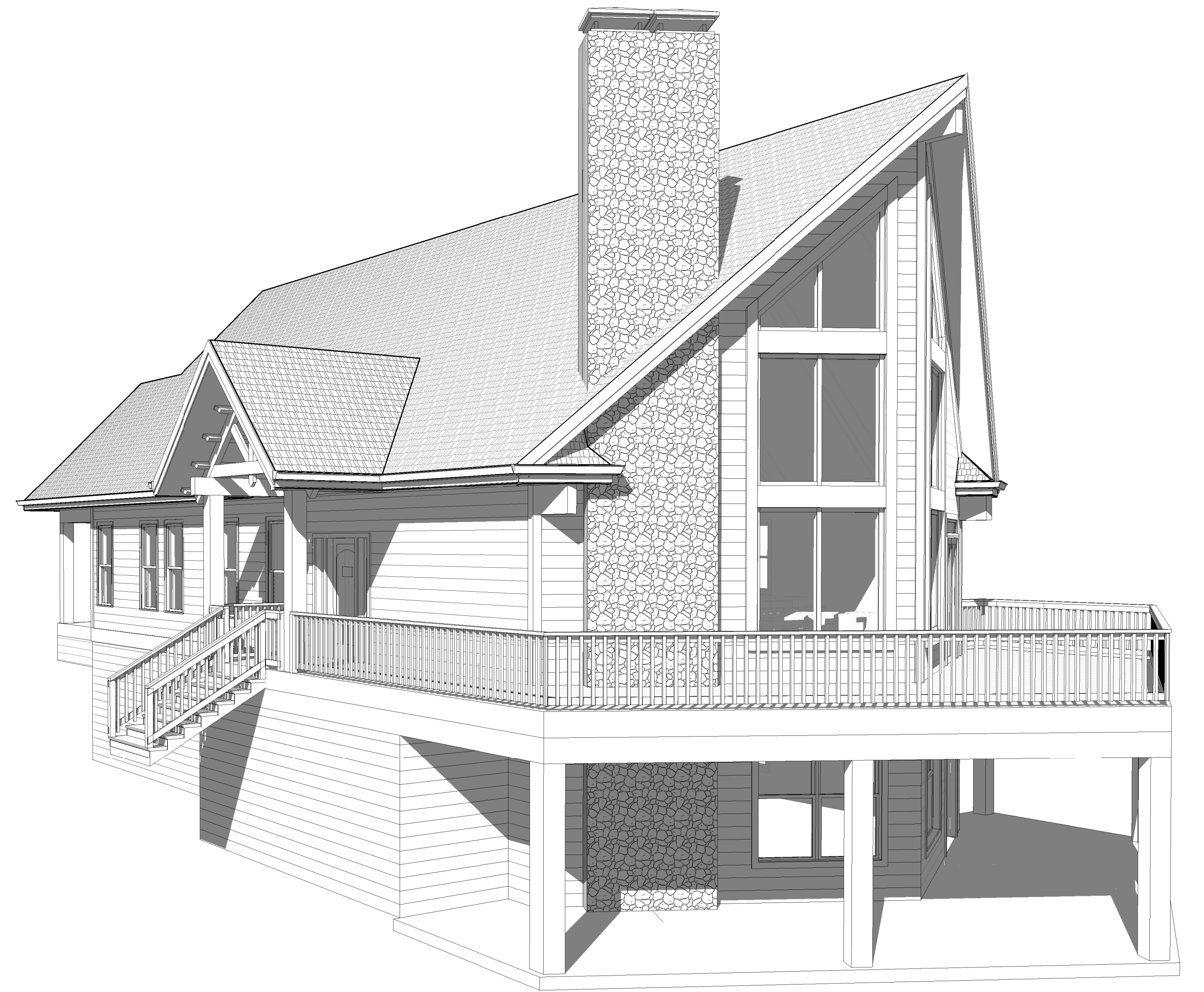
A2.02



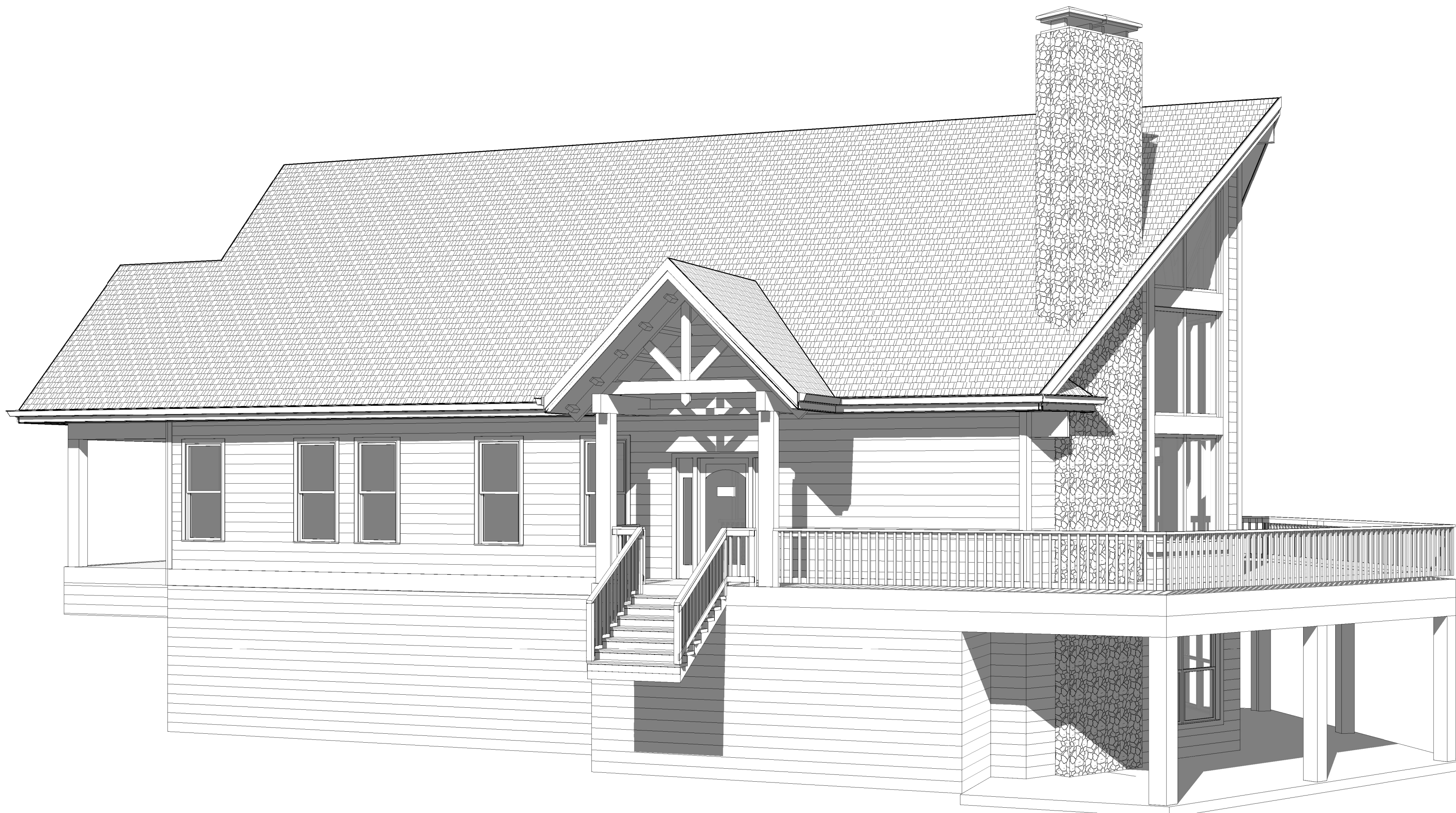
5 DOOLEY PERSPECTIVE - INTERIOR  
TOWARD KITCHEN



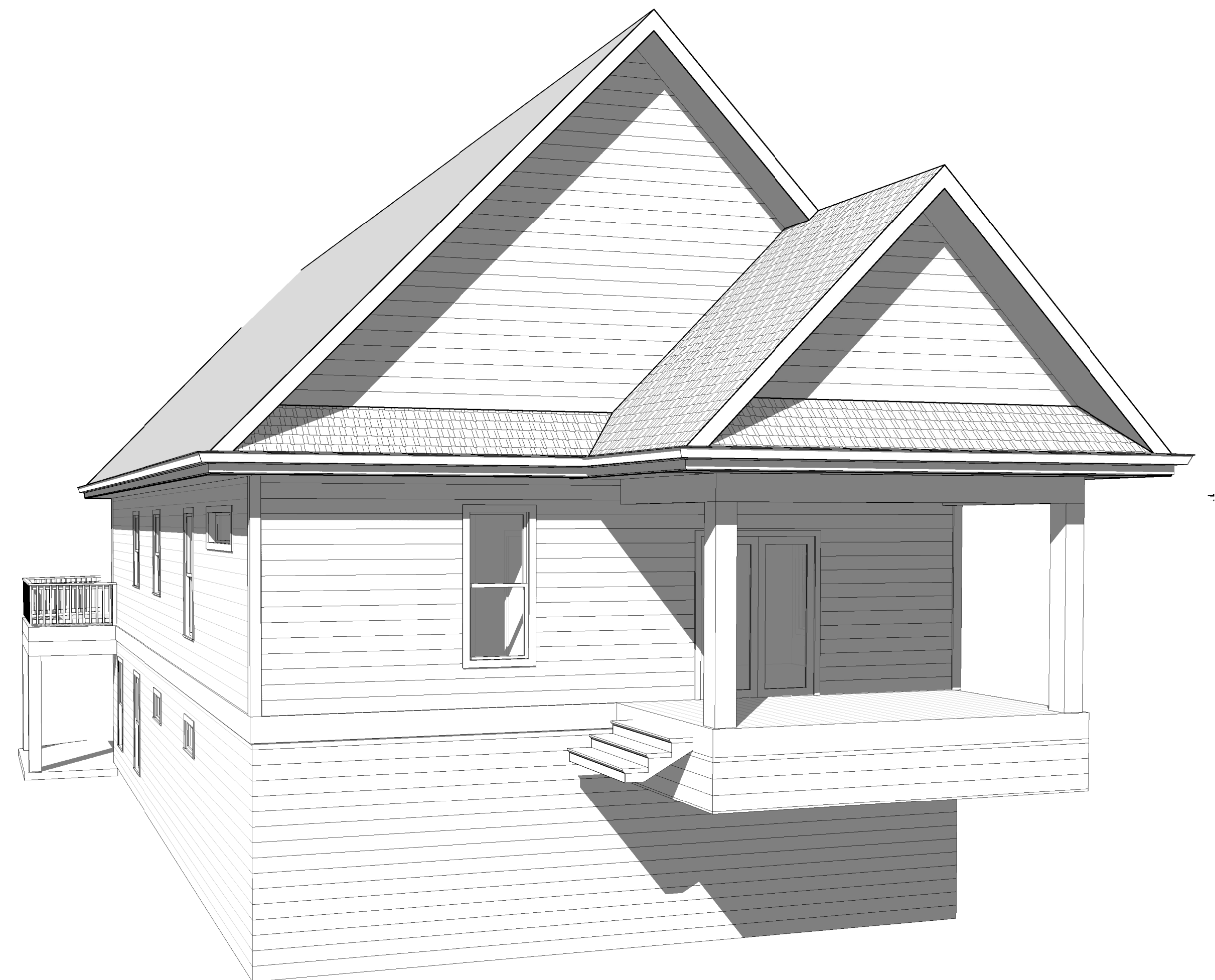
1 DOOLEY PERSPECTIVE - INTERIOR  
TOWARD VIEW WALL



2 DOOLEY PERSPECTIVE - DECK SIDE



4 DOOLEY PERSPECTIVE - ENTRY



3 DOOLEY PERSPECTIVE - REAR

Revision

PERSPECTIVES

A2.03