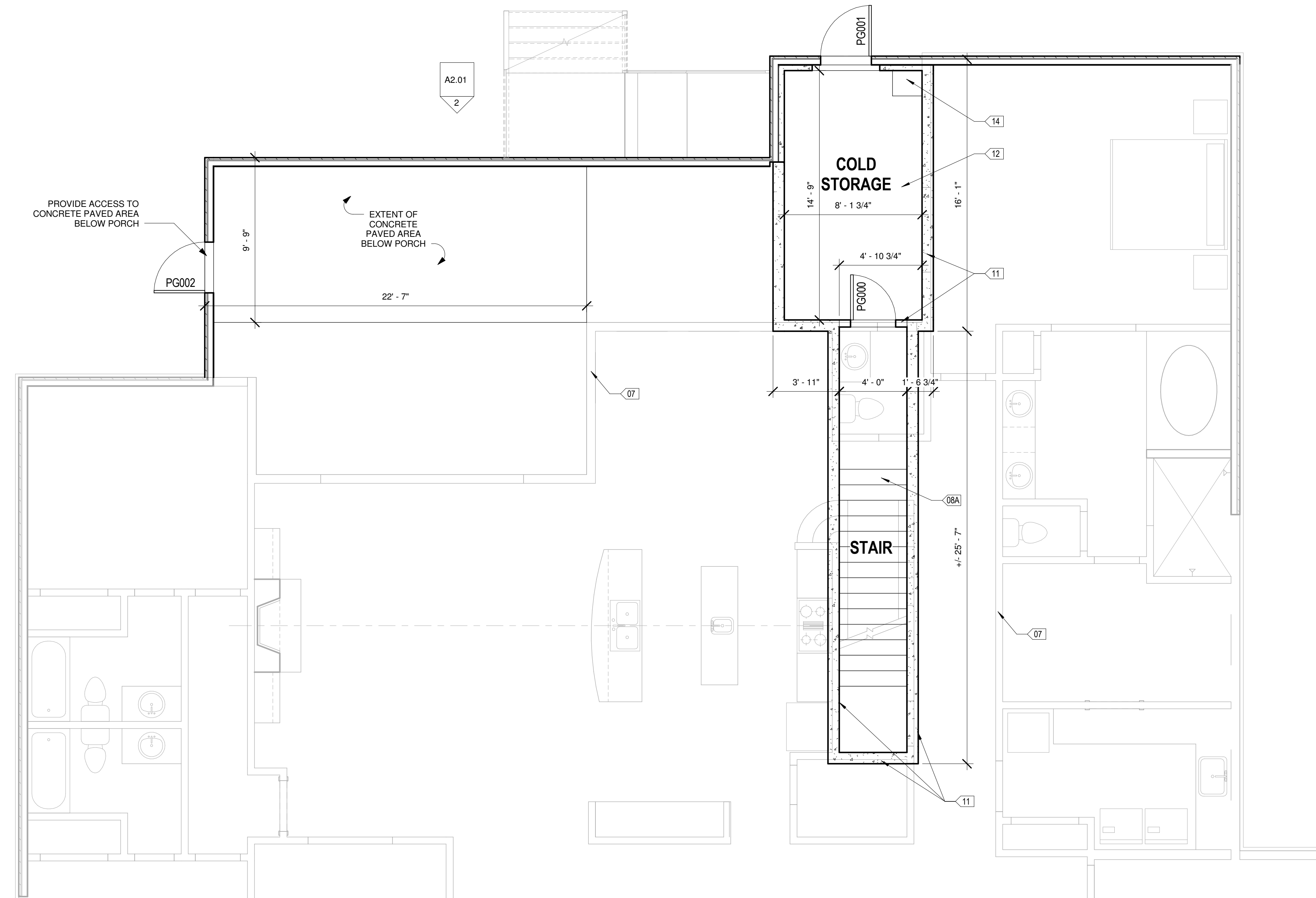


SVATORA RESIDENCE DOOR SCHEDULE		
NUMBER	DESCRIPTION	COMMENTS
PG000	INTERIOR, 2'-8" X 6'-8" INSUL	INSULATED
PG001	EXTERIOR, 3'-0" X 3'-0"	
PG002	EXTERIOR, 3'-0" X 3'-0"	
PG100	EXTERIOR, 3'-0" X 6'-8" W/ SIDELIGHTS	WOOD / GLASS DOOR W/ SIDELIGHTS
PG101	EXTERIOR PAIR, 2'-6" X 6'-8"	
PG102	INTERIOR, 2'-4" X 6'-8"	
PG103	INTERIOR, 2'-8" X 6'-8"	
PG104	INTERIOR, 2'-4" X 6'-8"	
PG105	INTERIOR PAIR, 2'-0" X 6'-8" BIFOLD	
PG106	INTERIOR, 2'-8" X 6'-8"	
PG107	INTERIOR, 2'-4" X 6'-8"	
PG108	INTERIOR PAIR, 2'-0" X 6'-8" BIFOLD	
PG109	EXTERIOR PAIR, 3'-0" X 6'-8"	3'-0" X 6'-8" FULL GLASS FIXED PANELS EACH SIDE TO MATCH DOORS.
PG110	EXTERIOR, 3'-0" X 6'-8" SCREEN DOOR	
PG111	EXTERIOR PAIR, 2'-8" X 6'-8"	
PG112	EXTERIOR, 2'-4" X 6'-8"	
PG113	INTERIOR, 2'-4" X 6'-8"	
PG114	INTERIOR, 2'-8" X 6'-8"	
PG115	INTERIOR, PR 2'-6" X 6'-8"	
PG116	INTERIOR, 2'-0" X 6'-8"	
PG117	INTERIOR, 2'-4" X 6'-8"	
PG118	INTERIOR, 2'-8" X 6'-8"	
PG119	INTERIOR, 2'-8" X 6'-8"	
PG120	INTERIOR, 2'-4" X 6'-8"	
PG121	INTERIOR, 3'-0" X 6'-8"	
PG122	INTERIOR PAIR, 2'-0" X 6'-8"	
PG123	INTERIOR PAIR, 2'-0" X 6'-8"	
PG124	INTERIOR, 3'-0" X 6'-8" GARAGE	INSULATED GARAGE DOOR. HALF GLASS. 20 MIN FIRE RATED.
PG125	EXTERIOR, 3'-0" X 6'-8" GARAGE	
PG126	EXTERIOR, 18'-0" X 8'-0"	STEEL, INSULATED (MIN R-9)
PG127	EXTERIOR, 10'-0" X 8'-0"	STEEL, INSULATED (MIN R-9)
PG200	INTERIOR PAIR, 3'-0" X 6'-8"	FULL GLASS, GRIDS TO MATCH EXTERIOR WINDOWS.
PG201	INTERIOR, 2'-4" X 6'-8"	
PG202	INTERIOR, 2'-8" X 6'-8" INSUL	INSULATED
PG203	INTERIOR, 2'-8" X 6'-8" INSUL	INSULATED
PG204	INTERIOR, 2'-8" X 6'-8" INSUL	INSULATED
PG205	INTERIOR, 2'-4" X 6'-8"	
PG206	INTERIOR, 2'-0" X 6'-8"	
PG207	INTERIOR PAIR, 3'-0" X 6'-8"	FULL GLASS, GRIDS TO MATCH EXTERIOR WINDOWS.
PG208	INTERIOR, 2'-4" X 6'-8"	

COORDINATE ROUGH OPENING REQUIREMENTS WITH FINAL DOOR SELECTIONS.

SVATORA RESIDENCE WINDOW SCHEDULE		
NUMBER	TYPE	DESCRIPTION
A	SINGLE, 3'-0" X 5'-2"	DOUBLE HUNG, LOW "E" GLAZING W/ INTERNAL GRIDS AS SHOWN.
B	TWIN, 3'-0" X 5'-2"	DOUBLE HUNG, LOW "E" GLAZING W/ INTERNAL GRIDS AS SHOWN.
C	TWIN, 3'-0" X 5'-2" W/ TRANSOM	DOUBLE HUNG, LOW "E" GLAZING W/ ELLIPTICAL TRANSOM
D	SINGLE, 4'-0" X 1'-8"	FIXED, LOW "E" GLAZING
E	TWIN, 2'-8" X 5'-2"	DOUBLE HUNG, LOW "E" GLAZING W/ INTERNAL GRIDS AS SHOWN.
F	SINGLE, 3'-0" X 4'-8"	DOUBLE HUNG, LOW "E" GLAZING W/ INTERNAL GRIDS AS SHOWN.
G	TRIPLE, 8'-0" X 5'-2"	DOUBLE HUNG, LOW "E" GLAZING W/ INTERNAL GRIDS AS SHOWN.

COORDINATE ROUGH OPENING REQUIREMENTS WITH FINAL WINDOW SELECTIONS.



1 GROUND FLOOR PLAN
1/4" = 1'-0"

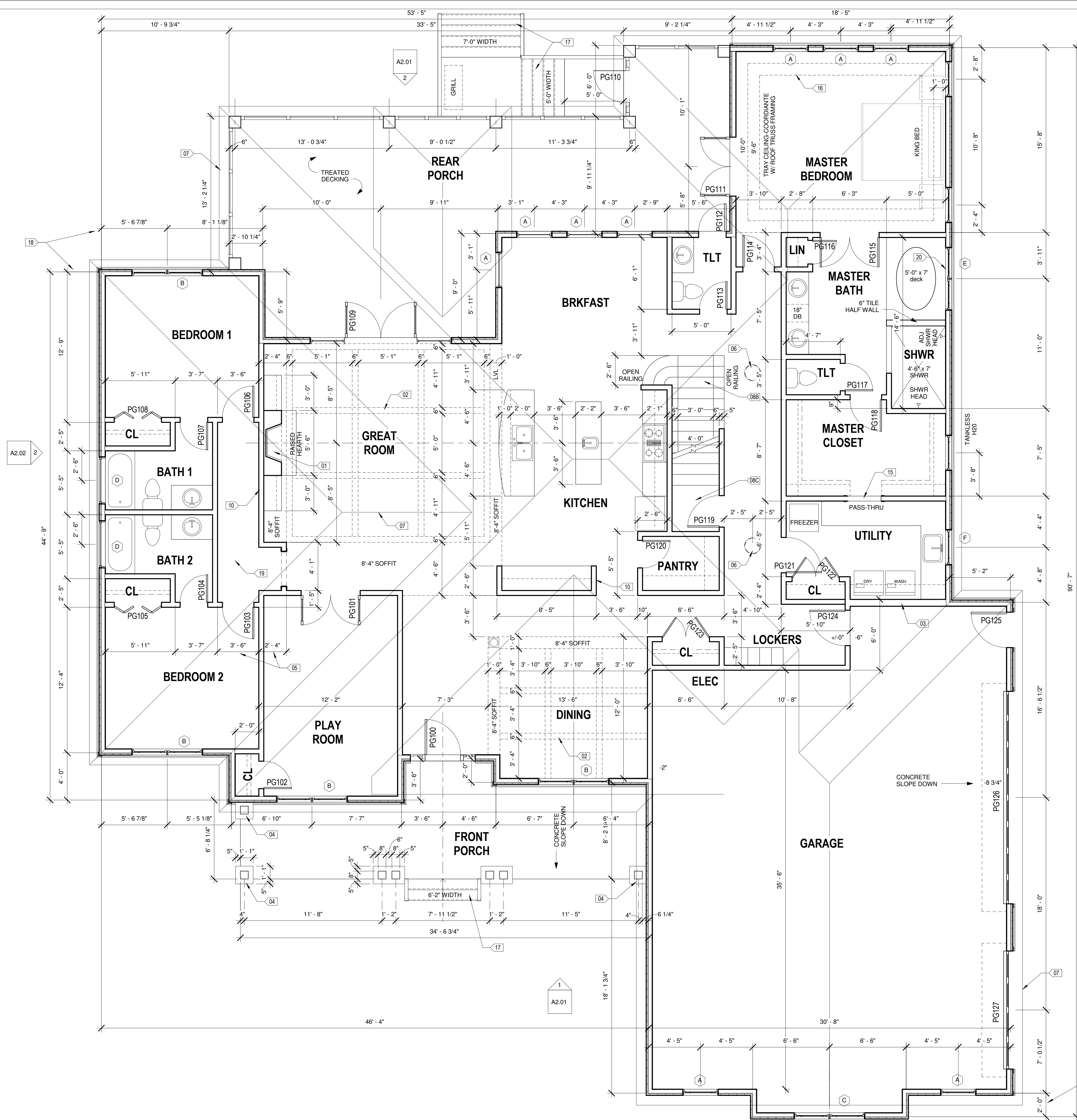
KEYNOTES - FLOOR PLAN

- 01 COORDINATE DIMENSIONS WITH SELECTED FIREPLACE AND VENT REQUIREMENTS. PROVIDE SURROUND AND HEARTH. CENTER ON WALL AS SHOWN. PROVIDE BUILT-IN CANNETRY EACH SIDE.
- 02 COFFERED CEILING - SHOWN DASHED. EXPOSED (6" X 6") FALSE BEAMS.
- 03 PROVIDE 2X6 STUD WALL AT REAR OF WASHER / DRYER APPLIANCES.
- 04 16" X 16" STONE PIER, TYPICAL UNLESS NOTED OTHERWISE.
- 05 3'-0" WIDE X 6'-8" HIGH DRYWALL OPENING W/ CASING.
- 06 SOLAR TUBE SHOWN DASHED, SEE ROOF PLAN FOR LOCATIONS.
- 07 FLOOR PLAN / ROOF PLAN ABOVE SHOWN AS HALFTONE.
- 08A 4'-0" WIDE STAIR SHOWN WITH 11" TREADS AND 7.2" RISERS FOR TOTAL OF 15 RISERS.
- 08B 4'-0" WIDE STAIR SHOWN WITH 11" TREADS AND 7.06" RISERS FOR TOTAL OF 17 RISERS. PROVIDE WOOD TREADS W/ 36" WIDE CARPET RUNNER.
- 08C MAINTAIN MINIMUM HEAD HEIGHT CLEARANCE OF 6'-8" ABOVE FINISHED FLOOR.
- 09 CEILING TRANSITION FROM 8'-0" TO 9'-0", SHOWN DASHED.
- 10 LOCATE RETURN AIR GRILLE THIS WALL AND CHASE UNDER CABINET FRAMING.
- 11 STRUCTURALLY ALIGN WALLS AT EACH LEVEL BELOW AND ABOVE.
- 12 PROVIDE CONCRETE (EITHER PRECAST OR POURED OVER METAL DECKING) CEILING ABOVE COLD STORAGE ROOM.
- 13 FLOOR BELOW SHOWN AS HALFTONE.
- 14 PROVIDE SUMP PIT AND PUMP IF NECESSARY.
- 15 PROVIDE 36" WIDE X 24" HIGH OPENING W/ BASE AT 6" ABOVE FINISHED FLOOR. OPENING TO ALLOW FOR STORAGE OF LAUNDRY BASKET UNDER COUNTER IN LAUNDRY ROOM. COORDINATE LOCATION WITH CABINETRY TO ALIGN WITH DOUBLE DOOR BASE CABINET.
- 16 TRAY CEILING, SHOWN DASHED.
- 17 VERIFY LANDING / STAIR NEED WITH GRADE.
- 18 DIMENSIONS TO OUTSIDE WALL ARE TO OUTSIDE FACE OF STUD, TYPICAL.
- 19 DIMENSIONS TO INSIDE WALL ARE TO OUTSIDE FACE OF DRYWALL, TYPICAL.
- 20 COORDINATE WINDOW SILL HEIGHT WITH TUB HEIGHT.
- 21 NOT USED.

Revision

GROUND FLOOR PLAN & SCHEDULES

A1.00



A2.02 2

1 A2.02

1 A2.01

HEATED SF SUMMARY	
1ST FLOOR HEATED	3,002
2ND FLOOR HEATED	1,234
COLD STORAGE	222
TOTAL	4,458

UNHEATED SF SUMMARY	
GARAGE	1,161
FRONT PORCH	270
REAR PORCH	653

KEYNOTES - FLOOR PLAN

- 01 COORDINATE DIMENSIONS WITH SELECTED FIREPLACE AND VENT REQUIREMENTS. PROVIDE SURROUND AND HEARTH. CENTER ON WALL AS SHOWN. PROVIDE BUILT-IN CANTIERY EACH SIDE.
- 02 COFFERED CEILING - SHOWN DASHED. EXPOSED (8" X 6") FALSE BEAMS.
- 03 PROVIDE 2X6 STUD WALL AT REAR OF WASHER / DRYER APPLIANCES.
- 04 16" X 16" STONE PIER. TYPICAL UNLESS NOTED OTHERWISE.
- 05 3'-0" WIDE X 6'-8" HIGH DRYWALL OPENING W/ CASING.
- 06 SOLAR TUBE SHOWN DASHED. SEE ROOF PLAN FOR LOCATIONS.
- 07 FLOOR PLAN / ROOF PLAN ABOVE SHOWN AS HALFTONE.
- 08A 4'-0" WIDE STAIR SHOWN WITH 11" TREADS AND 7.2" RISERS FOR TOTAL OF 15 RISERS.
- 08B 4'-0" WIDE STAIR SHOWN WITH 11" TREADS AND 7.06" RISERS FOR TOTAL OF 17 RISERS. PROVIDE WOOD TREADS W/ 36" WIDE CARPET RUNNER.
- 08C MAINTAIN MINIMUM HEAD HEIGHT CLEARANCE OF 6'-8" ABOVE FINISHED FLOOR.
- 09 CEILING TRANSITION FROM 8'-0" TO 9'-0", SHOWN DASHED.
- 10 LOCATE RETURN AIR GRILLE THIS WALL AND CHASE UNDER CABINET FRAMING.
- 11 STRUCTURALLY ALIGN WALLS AT EACH LEVEL BELOW AND ABOVE.
- 12 PROVIDE CONCRETE (EITHER PRECAST OR POURED OVER METAL DECKING) CEILING ABOVE COLD STORAGE ROOM.
- 13 FLOOR BELOW SHOWN AS HALFTONE.
- 14 PROVIDE SUMP PIT AND PUMP IF NECESSARY.
- 15 PROVIDE 36" WIDE X 24" HIGH OPENING W/ BASE AT 6" ABOVE FINISHED FLOOR. OPENING TO ALLOW FOR STORAGE OF LAUNDRY BASKET UNDER COUNTER IN LAUNDRY ROOM. COORDINATE LOCATION WITH CABINETRY TO ALIGN WITH DOUBLE DOOR BASE CABINET.
- 16 TRAY CEILING, SHOWN DASHED.
- 17 VERIFY LANDING / STAIR NEED WITH GRADE.
- 18 DIMENSIONS TO OUTSIDE WALL ARE TO OUTSIDE FACE OF STUD, TYPICAL.
- 19 DIMENSIONS TO INSIDE WALL ARE TO OUTSIDE FACE OF DRYWALL, TYPICAL.
- 20 COORDINATE WINDOW SILL HEIGHT WITH TUB HEIGHT.
- 21 NOT USED.

Revision

FIRST FLOOR PLAN

A1.01

1 FIRST FLOOR PLAN
1/4" = 1'-0"



① SVATORA, FRONT ELEVATION
1/4" = 1'-0"

CAST STONE CAP, TYPICAL
8"x8" POSTS, 8"x12" BEAM, 3"x3" ARCH BRACE W/ 2"x3" CENTER POST, ALL MEMBERS MORTISE & TENON JOINERY



② SVATORA, REAR ELEVATION
1/4" = 1'-0"

Revision

EXTERIOR ELEVATIONS

A2.01



① SVATORA EAST ELEVATION
1/4" = 1'-0"



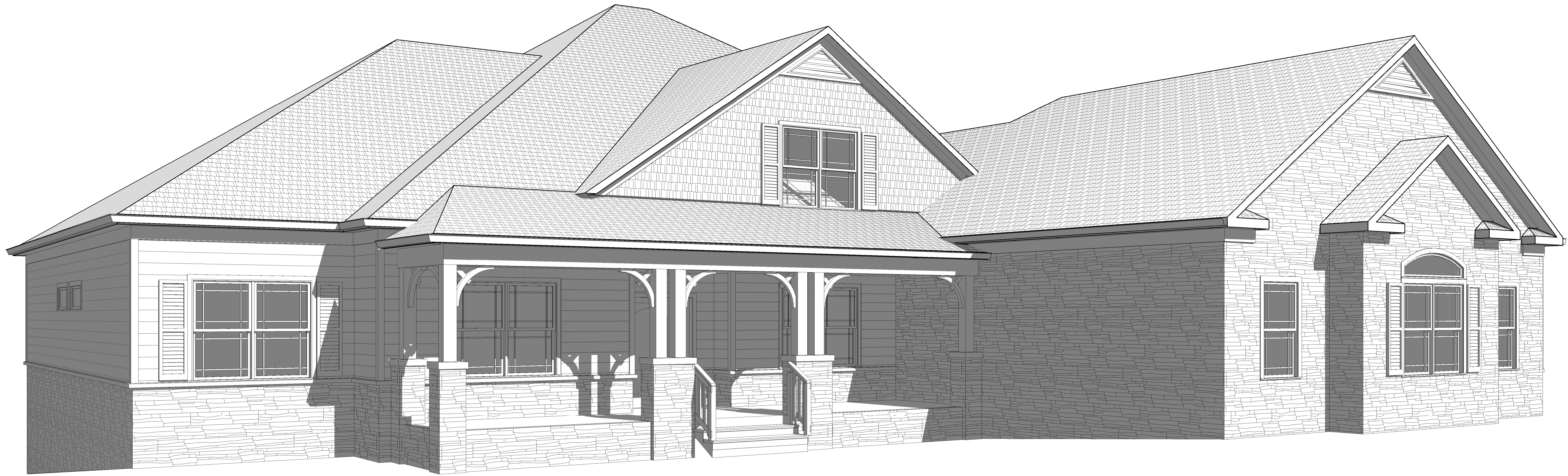
② SVATORA WEST ELEVATION
1/4" = 1'-0"

Revision

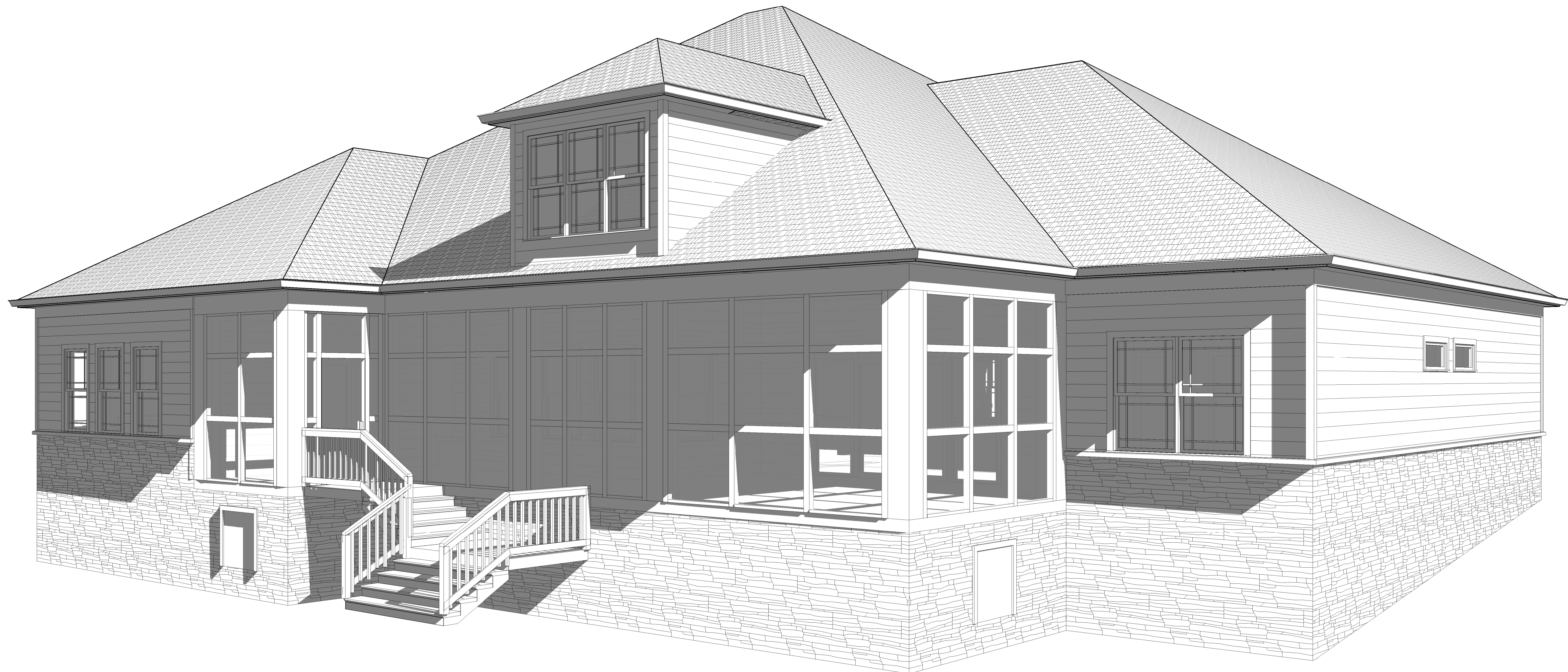
EXTERIOR ELEVATIONS &
SCHEDULES

A2.02

Project Number 2016.04
Date 03/08/2017



① SVATORA FRONT VIEW



② SVATORA REAR VIEW

Revision

PERSPECTIVE VIEWS

A2.03

Project Number 2016.04
Date 03/08/2017